



Bone Allograft

DBM Sponge Block

Common Uses:

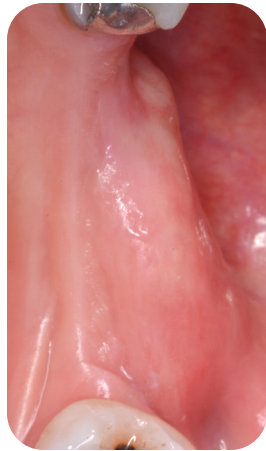
- Extraction ridge preservation
- Vertical & horizontal ridge augmentation
- Advanced Guided Bone Regeneration
- Sinus augmentation
- Block graft alternative



*see product page at surgicalesthetics.com for instructions!



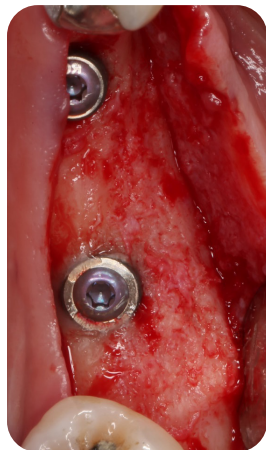
Pre-op



3mos PO tunnel



3mos PO tunnel



6mos implant placement

Features & Benefits:

- 100% human allograft
- 0% fillers or additives
- Will hold spacial dimension in a defect*
- Soft texture doesn't perforate soft tissue*

Sizes:

10x6x7mm

BG-024010

20x6x7mm

BG-024020

- Remineralizes in 6-9 months*
- Typically doesn't require fixation (when passive stability is achieved)*
- Can be trimmed to size

