

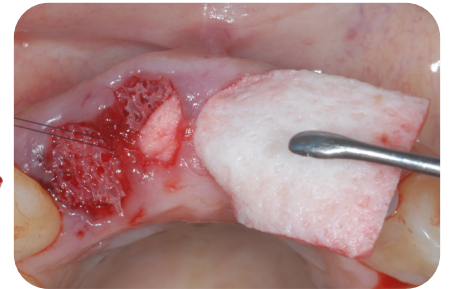
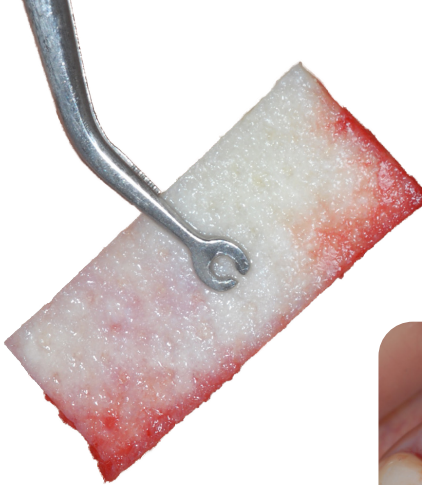


GingiDerm™

Acellular Dermis

Common Uses:

- Root coverage
- Tunneling techniques
- Gingival augmentation around implants
- Socket ridge preservation



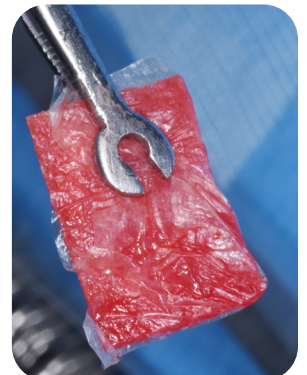
Advanced Technology

- Absent of cellular components
- Preserved biological properties essential for regeneration
- Ideal thickness for hard- and soft-tissue procedures
- 100% human dermal tissue
- **Orientation not required!** There's no "right-side-up/down", for easy placement
- Ambient room temperature storage
- Promotes revascularization



Sku Specs

GD10x10	10x10mm
GD10x20	10x20mm
GD10x40	10x40mm
GD20x40	20x40mm



As shown, wrapped by an AmnioGain™ Sheet